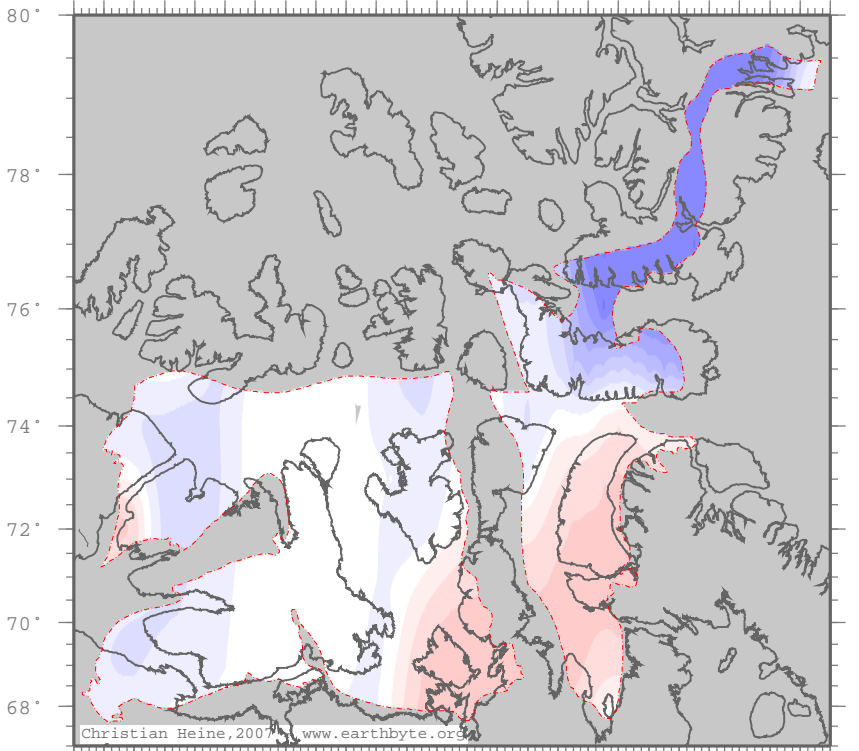
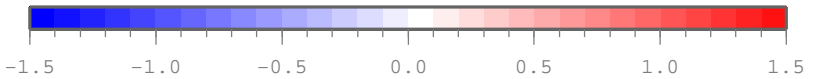


ArcticStablePlatform – betacrustlith



Christian Heine, 2007, www.earthbyte.org

23 24 24 24 24 24 24 25 25 25 25 25 25 26 26 26 26 26 26 27 27 27 27 27 27 28 28 28 28 28 28 28 28



$1 - \beta_{\text{crust}} / \beta_{\text{lith}}$

