

Supporting document for
**Paleolatitudinal distribution of lithologic indicators of
climate in a paleogeographic framework**

WENCHAO CAO*, SIMON WILLIAMS, NICOLAS FLAMENT, SABIN ZAHIROVIC,
CHRISTOPHER SCOTese & R. DIETMAR MÜLLER

*To whom correspondence should be addressed. E-mail: wenchao.cao@sydney.edu.au

This PDF file includes:

Figure S1

Figure S2

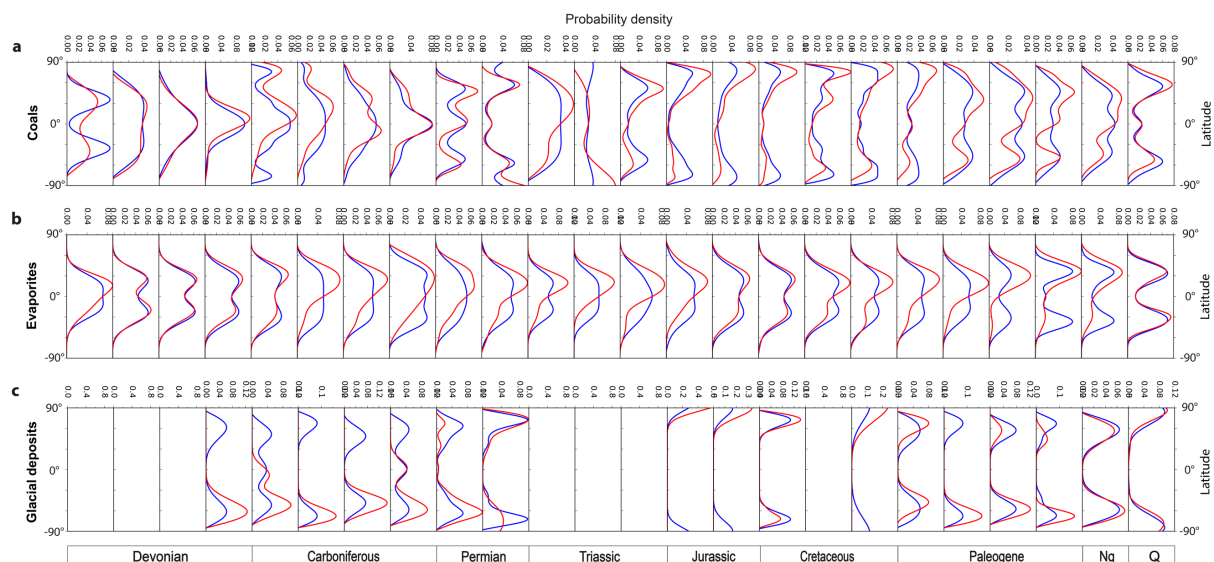


Figure S1. Latitudinal distributions of coals (a), evaporites (b) and glacial deposits (c), with data combined over the two hemispheres (blue lines) and without data combination (red lines), for each time interval since the Devonian period.

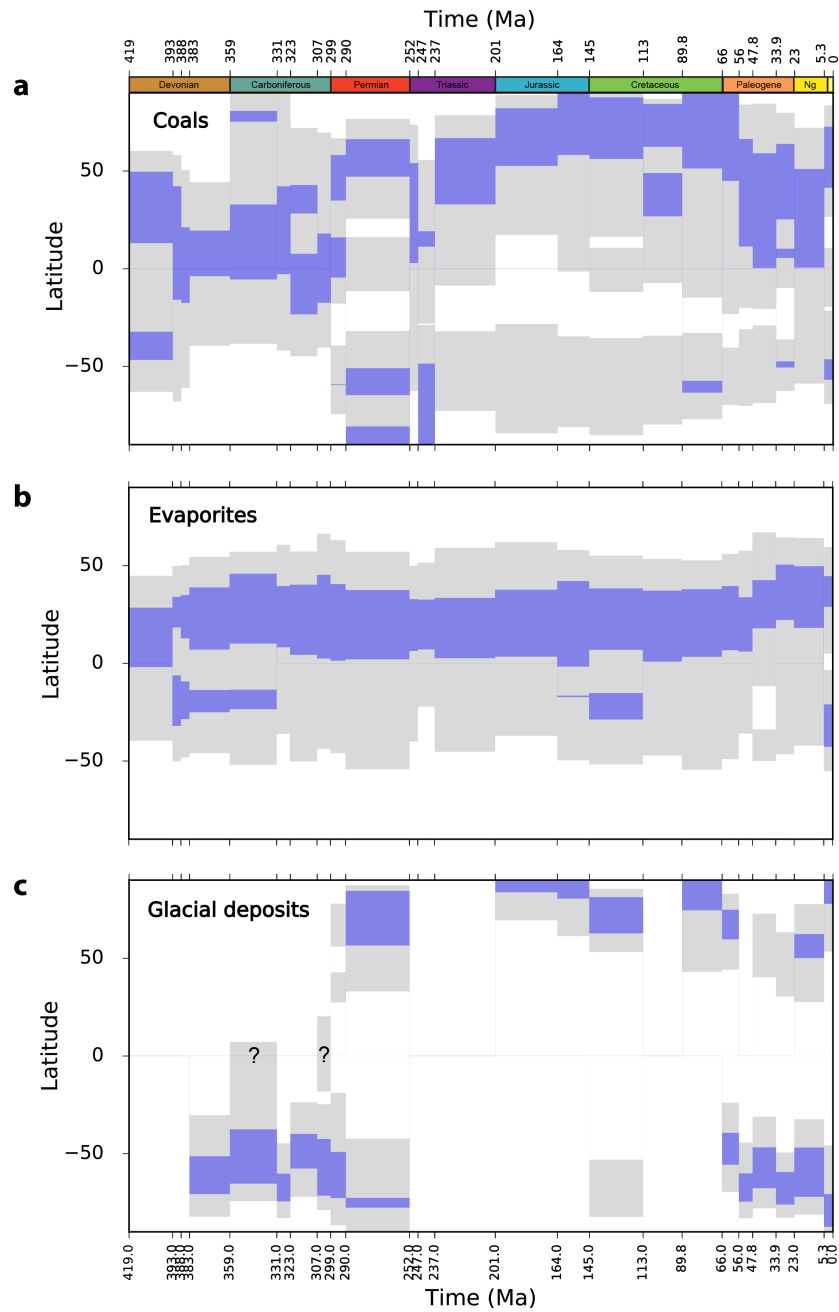


Figure S2. High-density latitudinal belts of coals (a), evaporites (b) and glacial deposits (c), with 50% (blue area) and 95% (light grey area) confidence for each hemisphere independently since the Devonian period. The areas marked with a question mark indicate records of limited use for climate interpretation.